



FACILITY-BASED ASSESSMENT AREA:

DALLAS-PLANO-IRVING, TX MD PARTIAL

Description: Dallas County

Total Census Tracts in Facility-Based Assessment Area: 645

Dallas County – 645

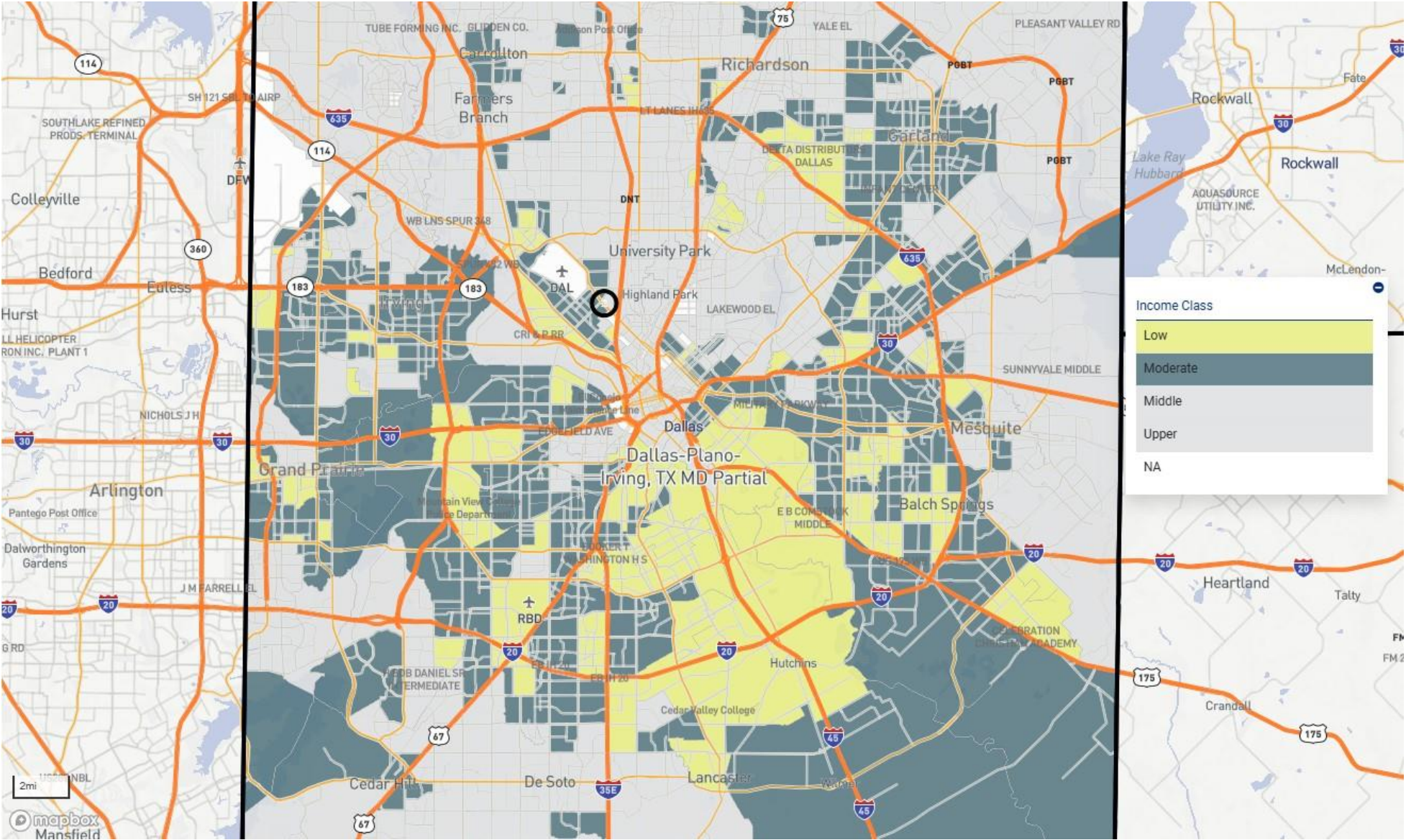
All census tracts in Dallas County are included in this Facility-Based Assessment Area.

Note: This Facility-Based Assessment Area was not determined on the basis of race, color, national origin, religion, sex, handicap, familial status (having children under 18), age, marital status or the receipt of income derived from public assistance.

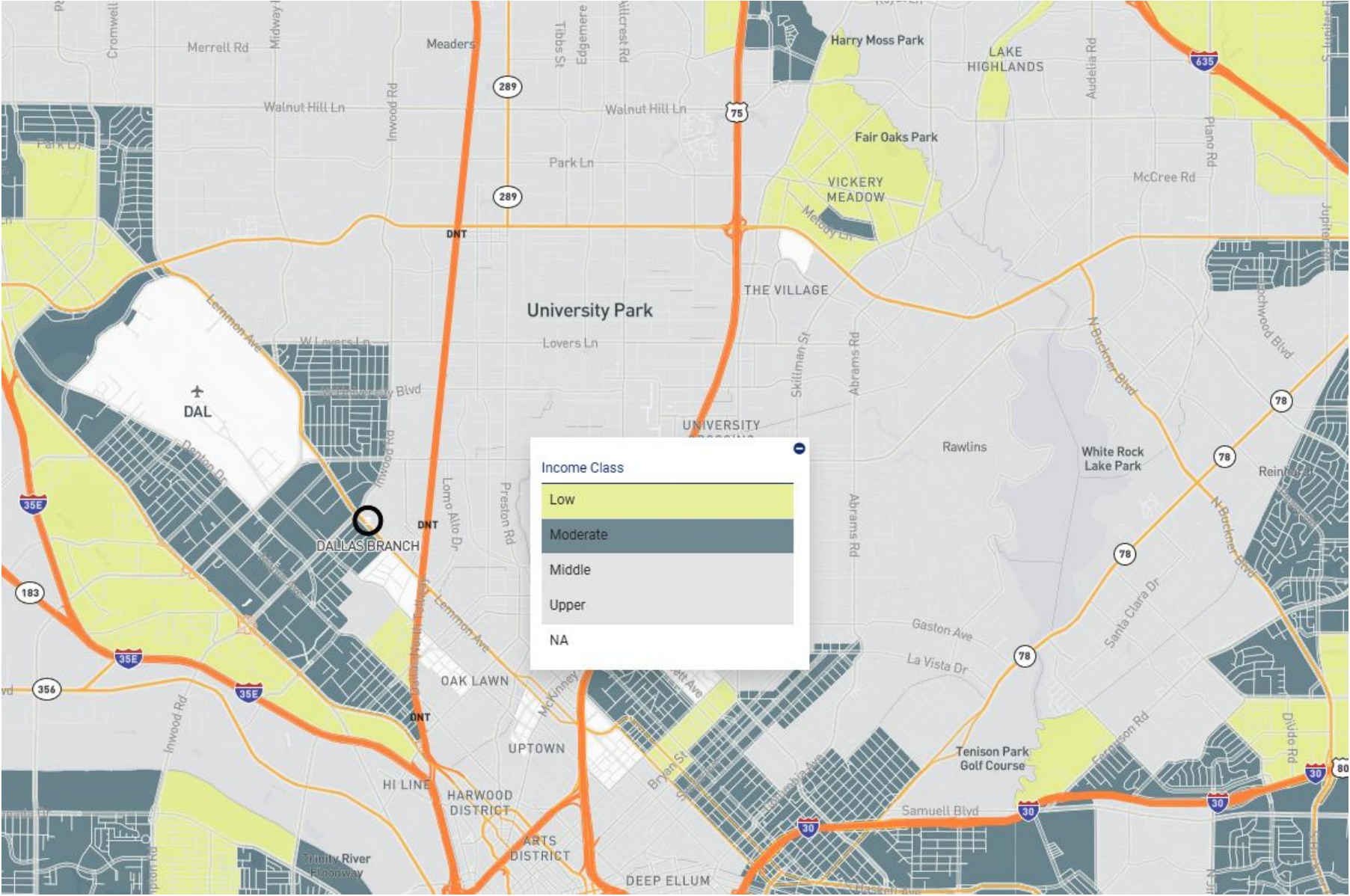
**Effective April 25, 2022, the Bank opened a single branch in Texas.*

Sources: 2020 Census Data with 2020 ACS-5 Updates and 2024 FFIEC/ACS-1 Updates

Assessment Set: 2025 BANKUNITED FACILITY-BASED ASSESSMENT AREAS
Assessment Area: DALLAS-PLANO-IRVING, TX MD PARTIAL



Facility-Based Assessment Area: DALLAS-PLANO-IRVING, TX MD PARTIAL



48	113	0031.03	19124	\$110,300	\$109,375	\$136,596	123.84	UPPER INCOME	1,274	50.8	591	23.56	425	16.95	2,083	83.05	111	4.43	9.51	142	30	20	3,522	Neither
48	113	0037.00	19124	\$110,300	\$34,493	\$43,072	39.05	LOW INCOME	3,528	97.81	2,494	69.14	939	26.03	2,668	73.97	0	0	17.1	515	1,345	4	261	Neither
48	113	0042.01	19124	\$110,300	\$98,409	\$122,896	111.42	MIDDLE INCOME	2,502	55.59	295	6.55	1,958	43.5	2,543	56.5	104	2.31	13.92	1,033	1,400	11	909	Neither
48	113	0042.02	19124	\$110,300	\$120,893	\$150,979	136.88	UPPER INCOME	1,297	55.98	129	5.57	1,049	45.27	1,268	54.73	55	2.37	14.36	537	672	3	381	Neither
48	113	0043.00	19124	\$110,300	\$57,244	\$71,485	64.81	MODERATE INCOME	3,942	72.21	1,255	22.99	2,291	41.97	3,168	58.03	252	4.62	9.96	423	730	16	3,524	Neither
48	113	0044.00	19124	\$110,300	\$136,458	\$170,425	154.51	UPPER INCOME	1,153	35.24	236	7.21	720	22	2,552	78	73	2.23	7.61	1,263	1,637	9	643	Neither
48	113	0045.00	19124	\$110,300	\$48,875	\$61,040	55.34	MODERATE INCOME	4,463	82.51	189	3.49	4,130	76.35	1,279	23.65	20	0.37	22.87	1,175	1,649	5	385	Neither
48	113	0046.00	19124	\$110,300	\$113,333	\$141,537	128.32	UPPER INCOME	930	49.55	207	11.03	620	33.03	1,257	66.97	29	1.55	12.17	412	568	6	339	Neither
48	113	0047.00	19124	\$110,300	\$60,946	\$76,107	69	MODERATE INCOME	2,227	87.3	110	4.31	2,042	80.05	509	19.95	28	1.1	14.38	295	740	4	696	Neither
48	113	0048.00	19124	\$110,300	\$47,179	\$58,922	53.42	MODERATE INCOME	2,349	95.45	139	5.65	2,178	88.5	283	11.5	11	0.45	17.5	211	343	4	311	Neither
48	113	0050.00	19124	\$110,300	\$49,016	\$61,216	55.5	MODERATE INCOME	3,180	93.67	131	3.86	3,028	89.19	367	10.81	11	0.32	16.98	774	1,145	4	583	Neither
48	113	0051.00	19124	\$110,300	\$53,371	\$66,654	60.43	MODERATE INCOME	2,268	88.91	81	3.18	2,149	84.24	402	15.76	8	0.31	15.34	544	806	1	178	Neither
48	113	0052.00	19124	\$110,300	\$82,955	\$103,605	93.93	MIDDLE INCOME	3,430	84.67	103	2.54	3,223	79.56	828	20.44	17	0.42	10.72	1,069	1,515	4	319	Neither
48	113	0053.00	19124	\$110,300	\$47,716	\$59,584	54.02	MODERATE INCOME	5,886	89.47	100	1.52	5,674	86.24	905	13.76	23	0.35	20.72	1,555	2,281	5	348	Neither
48	113	0054.00	19124	\$110,300	\$44,115	\$55,095	49.95	LOW INCOME	5,074	93.93	1,441	26.68	3,533	65.4	1,869	34.6	19	0.35	14.95	1,137	1,854	4	345	Neither
48	113	0055.00	19124	\$110,300	\$55,043	\$68,739	62.32	MODERATE INCOME	4,009	96.98	1,548	37.45	2,393	57.89	1,741	42.11	23	0.56	29.27	1,186	1,612	4	310	Neither
48	113	0056.00	19124	\$110,300	\$43,341	\$60,367	54.73	MODERATE INCOME	6,947	98.96	1,191	16.97	5,667	80.73	1,353	19.27	16	0.23	29.23	859	1,960	2	328	Neither
48	113	0057.00	19124	\$110,300	\$34,906	\$43,591	39.52	LOW INCOME	5,420	98.15	2,167	39.24	3,209	58.11	2,313	41.89	8	0.14	28.59	822	1,831	2	456	Neither
48	113	0059.01	19124	\$110,300	\$42,771	\$53,418	48.43	LOW INCOME	5,598	98.14	2,746	48.14	2,752	48.25	2,952	51.75	9	0.16	21.53	1,168	2,075	7	382	Neither
48	113	0059.02	19124	\$110,300	\$36,371	\$45,422	41.18	LOW INCOME	4,030	97.2	2,453	59.17	1,542	37.19	2,604	62.81	4	0.1	30.68	653	1,154	4	239	Neither
48	113	0060.01	19124	\$110,300	\$49,758	\$62,143	56.34	MODERATE INCOME	3,667	96.75	733	19.34	2,899	76.49	891	23.51	7	0.18	24.42	682	1,041	4	236	Neither
48	113	0060.02	19124	\$110,300	\$35,767	\$44,660	40.49	LOW INCOME	5,155	90.93	3,377	59.57	1,155	20.37	4,514	79.63	224	3.95	25.42	145	789	2	433	Neither
48	113	0061.00	19124	\$110,300	\$45,298	\$56,573	51.29	MODERATE INCOME	3,969	88.89	2,073	46.43	1,734	38.84	2,731	61.16	36	0.81	28.22	824	1,086	8	422	Neither
48	113	0062.00	19124	\$110,300	\$57,392	\$71,673	64.98	MODERATE INCOME	5,614	90.3	1,888	30.37	3,600	57.91	2,617	42.09	38	0.61	16.82	952	1,921	5	492	Neither
48	113	0063.01	19124	\$110,300	\$64,327	\$80,331	72.83	MODERATE INCOME	5,350	93.94	353	6.2	4,931	86.58	764	13.42	16	0.28	8.41	1,434	1,949	8	246	Neither
48	113	0063.02	19124	\$110,300	\$65,573	\$81,887	74.24	MODERATE INCOME	3,412	82.38	115	2.78	3,216	77.64	926	22.36	22	0.53	11.3	1,189	1,580	4	306	Neither
48	113	0064.01	19124	\$110,300	\$64,750	\$80,861	73.31	MODERATE INCOME	2,228	94.73	19	0.81	2,196	93.37	156	6.63	0	0	24.58	663	897	1	78	Neither
48	113	0064.02	19124	\$110,300	\$45,833	\$57,235	51.89	MODERATE INCOME	4,738	96.12	51	1.03	4,670	94.75	259	5.25	4	0.08	27.43	776	1,210	3	155	Neither
48	113	0065.01	19124	\$110,300	\$63,542	\$79,350	71.94	MODERATE INCOME	5,201	96.31	90	1.67	5,091	94.28	309	5.72	13	0.24	13.48	1,194	1,558	4	187	Neither
48	113	0065.02	19124	\$110,300	\$64,900	\$81,048	73.48	MODERATE INCOME	3,435	95.82	54	1.51	3,338	93.11	247	6.89	7	0.2	7.14	845	1,071	1	228	Neither
48	113	0067.01	19124	\$110,300	\$45,483	\$56,804	51.5	MODERATE INCOME	4,094	97.57	66	1.57	3,985	94.97	211	5.03	13	0.31	28.3	949	1,400	3	140	Neither
48	113	0067.02	19124	\$110,300	\$46,127	\$57,610	52.23	MODERATE INCOME	2,331	89.48	77	2.96	2,212	84.91	393	15.09	14	0.54	28.89	373	823	1	106	Neither
48	113	0068.00	19124	\$110,300	\$52,566	\$65,651	59.52	MODERATE INCOME	4,341	86.61	625	12.47	3,593	71.69	1,419	28.31	46	0.92	20.6	924	1,154	6	386	Neither
48	113	0069.00	19124	\$110,300	\$56,687	\$70,791	64.18	MODERATE INCOME	3,237	90.88	433	12.16	2,720	76.36	842	23.64	23	0.65	21.55	423	626	0	227	Neither
48	113	0071.01	19124	\$110,300	\$171,000	\$213,563	193.62	UPPER INCOME	372	17.19	31	1.43	149	6.89	2,015	93.11	24	5.73	8.67	524	541	12	702	Neither
48	113	0071.02	19124	\$110,300	\$62,778	\$78,401	71.08	MODERATE INCOME	3,741	68.76	1,524	28.01	1,929	35.45	3,512	64.55	124	2.28	10.49	1,204	1,883	16	982	Neither
48	113	0072.03	19124	\$110,300	\$40,603	\$50,705	45.97	LOW INCOME	3,018	95.99	220	7	2,758	87.72	386	12.28	20	0.64	21.68	0	252	1	77	Neither
48	113	0072.04	19124	\$110,300	\$35,110	\$43,844	39.75	LOW INCOME	4,338	96.72	207	4.62	4,088	91.15	397	8.85	4	0.09	11.84	106	187	3	202	Neither
48	113	0072.05	19124	\$110,300	\$34,908	\$43,591	39.52	LOW INCOME	4,330	97.94	132	2.99	4,151	93.89	270	6.11	11	0.25	28.23	79	396	1	67	Neither
48	113	0072.06	19124	\$110,300	\$25,833	\$32,263	29.25	LOW INCOME	2,248	96.69	143	6.15	2,092	89.98	233	10.02	11	0.47	39.99	14	32	1	101	Neither
48	113	0073.01	19124	\$110,300	\$250,001	\$312,226	283.07	UPPER INCOME	202	9.58	6	0.28	99	4.7	2,009	95.3	32	1.52	3.71	604	710	147	8,032	Neither
48	113	0073.02	19124	\$110,300	\$189,821	\$237,068	214.93	UPPER INCOME	940	23.8	132	3.34	451	11.42	3,498	88.58	166	4.2	4.81	1,196	1,426	27	1,763	Neither
48	113	0076.01	19124	\$110,300	\$168,125	\$209,967	190.36	UPPER INCOME	502	26.5	42	2.22	215	11.35	1,679	88.65	162	8.55	2.34	561	864	15	598	Neither
48	113	0076.04	19124	\$110,300	\$250,001	\$312,226	283.07	UPPER INCOME	627	20.37	48	1.56	237	7.7	2,841	92.3	221	7.18	0.38	1,050	1,123	13	1,067	Neither
48	113	0076.05	19124	\$110,300	\$247,250	\$308,796	279.96	UPPER INCOME	264	17.59	15	1	87	5.8	1,414	94.2	90	6	2.28	760	733	17	868	Neither
48	113	0077.01	19124	\$110,300	\$250,001	\$312,226	283.07	UPPER INCOME	366	14.65	33	1.32	164	6.57	2,334	93.43	109	4.36	11.11	458	389	3	395	Neither
48	113	0077.02	19124	\$110,300	\$154,038	\$192,374	174.41	UPPER INCOME	513	14.47	34	0.96	205	5.78	3,341	94.22	156	4.4	10.33	1,359	913	8	800	Neither
48	113	0078.01	19124	\$110,300	\$119,504	\$149,247	135.31	UPPER INCOME	367	15.1	44	1.81	195	8.02	2,235	91.98	75	3.09	2.52	841	991	26	1,307	Neither
48	113	0078.05	19124	\$110,300	\$80,417	\$100,428	91.05	MIDDLE INCOME	1,633	50.64	632	19.6	788	24.43	2,437	75.57	101	3.13	15.56	698	1,037	9	741	Neither
48	113	0078.09	19124	\$110,300	\$77,711	\$97,053	87.99	MIDDLE INCOME	1,365	47.95	515	18.09	665	23.36	2,182	76.64	55	1.93	10.17	633	757	9	494	Neither
48	113	0078.10	19124	\$110,300	\$108,333	\$135,294	122.66	UPPER INCOME	2,763	52.27	1,326	25.09	855	16.17	4,431	83.83	360	6.81	15.54	961	1,049	15	1,360	Neither
48	113	0078.12	19124	\$110,300	\$204,625	\$255,554	231.69	UPPER INCOME	516	16.06	63	1.96	236	7.35	2,976	92.65	85	2.65	3.1	1,064	1,146	10	536	Neither
48	113	0078.15	19124	\$110,300	\$36,128	\$45,113	40.9	LOW INCOME	4,508	88.74	1,099	21.63	1,516	29.84	3,564	70.16	1,745	34.35	29.21	199	607	2	4	

48	113	0078.32	19124	\$110,300	\$31,500	\$39,333	35.66	LOW INCOME	2,522	94.21	556	20.77	1,345	50.24	1,332	49.76	577	21.55	45.72	45	265	0	71	Neither
48	113	0078.33	19124	\$110,300	\$35,036	\$43,756	39.67	LOW INCOME	2,275	89.6	790	31.11	1,340	52.78	1,199	47.22	78	3.07	44.88	56	123	2	90	Neither
48	113	0078.34	19124	\$110,300	\$43,105	\$53,826	48.8	LOW INCOME	2,643	90.64	1,919	65.81	602	20.64	2,314	79.36	23	0.79	22.45	47	118	3	150	Neither
48	113	0078.35	19124	\$110,300	\$42,650	\$53,264	48.29	LOW INCOME	2,206	76.57	1,393	48.35	679	23.57	2,202	76.43	42	1.46	12.18	501	505	0	239	Neither
48	113	0079.02	19124	\$110,300	\$144,024	\$179,866	163.07	UPPER INCOME	1,416	26.06	201	3.7	800	14.72	4,633	85.28	144	2.65	5.07	1,683	2,313	16	851	Neither
48	113	0079.03	19124	\$110,300	\$152,365	\$190,290	172.52	UPPER INCOME	574	26.39	96	4.41	235	10.8	1,940	89.2	80	3.68	7.96	605	743	3	372	Neither
48	113	0079.06	19124	\$110,300	\$250,001	\$312,226	283.07	UPPER INCOME	297	11.44	23	0.89	128	4.93	2,469	95.07	75	2.89	5.03	628	782	17	739	Neither
48	113	0079.09	19124	\$110,300	\$85,792	\$107,145	97.14	MIDDLE INCOME	1,145	52.55	263	12.07	367	16.84	1,812	83.16	427	19.6	20.42	0	383	2	239	Neither
48	113	0079.10	19124	\$110,300	\$113,220	\$141,405	128.2	UPPER INCOME	1,503	50.9	360	12.19	546	18.49	2,407	81.51	438	14.83	9.92	16	250	0	184	Neither
48	113	0079.12	19124	\$110,300	\$109,583	\$136,860	124.08	UPPER INCOME	959	45.41	231	10.94	398	18.84	1,714	81.16	199	9.42	5.94	0	401	22	2,054	Neither
48	113	0079.13	19124	\$110,300	\$132,212	\$165,119	149.7	UPPER INCOME	1,137	34.6	300	9.13	479	14.58	2,807	85.42	235	7.15	5.25	757	622	21	1,632	Neither
48	113	0079.14	19124	\$110,300	\$105,588	\$131,864	119.55	MIDDLE INCOME	1,363	38.95	297	8.49	510	14.58	2,989	85.42	383	10.95	26.66	307	381	26	2,440	Neither
48	113	0079.15	19124	\$110,300	\$0	\$0	0	NA	901	43.99	238	11.62	359	17.53	1,689	82.47	245	11.96	13.11	10	121	2	105	Neither
48	113	0079.16	19124	\$110,300	\$158,519	\$197,977	179.49	UPPER INCOME	404	32.48	82	6.59	171	13.75	1,073	86.25	99	7.96	6.08	11	46	0	70	Neither
48	113	0080.00	19124	\$110,300	\$250,001	\$312,226	283.07	UPPER INCOME	1,256	16.41	51	0.67	565	7.38	7,087	92.62	242	3.16	1.43	2,486	2,735	29	1,660	Neither
48	113	0081.01	19124	\$110,300	\$91,134	\$113,819	103.19	MIDDLE INCOME	708	38.46	153	8.31	394	21.4	1,447	78.6	65	3.53	2.63	23	125	3	232	Neither
48	113	0081.02	19124	\$110,300	\$178,125	\$222,464	201.69	UPPER INCOME	909	19.56	83	1.79	518	11.15	4,129	88.85	93	2	3.11	1,608	1,862	25	880	Neither
48	113	0082.00	19124	\$110,300	\$86,389	\$107,884	97.81	MIDDLE INCOME	1,908	45.91	453	10.9	1,213	29.19	2,943	70.81	61	1.47	4.85	839	1,449	18	885	Neither
48	113	0084.01	19124	\$110,300	\$48,026	\$59,981	54.38	MODERATE INCOME	4,749	90.99	232	4.45	4,434	84.96	785	15.04	9	0.17	9.92	1,131	1,775	4	175	Neither
48	113	0084.02	19124	\$110,300	\$53,616	\$66,952	60.7	MODERATE INCOME	4,004	92.64	181	4.19	3,789	87.67	533	12.33	21	0.49	10.29	894	1,268	1	214	Neither
48	113	0085.00	19124	\$110,300	\$54,766	\$68,397	62.01	MODERATE INCOME	4,318	89.68	629	13.06	3,680	76.43	1,135	23.57	16	0.33	22.18	749	1,090	11	393	Neither
48	113	0086.04	19124	\$110,300	\$33,062	\$41,285	37.43	LOW INCOME	3,146	96.89	2,147	66.12	936	28.83	2,311	71.17	7	0.22	39.01	235	672	2	134	Neither
48	113	0087.01	19124	\$110,300	\$29,631	\$37,006	33.55	LOW INCOME	5,005	97.53	3,812	74.28	1,078	21.01	4,054	78.99	15	0.29	41.62	697	21,570	4	277	Neither
48	113	0087.03	19124	\$110,300	\$31,935	\$39,884	36.16	LOW INCOME	3,424	98.42	1,442	41.45	1,928	55.42	1,551	44.58	21	0.6	33.74	657	1,118	1	165	Neither
48	113	0087.04	19124	\$110,300	\$21,978	\$27,443	24.88	LOW INCOME	3,850	97.99	2,747	69.92	1,015	25.83	2,914	74.17	1	0.03	52.18	614	1,269	7	255	Neither
48	113	0087.05	19124	\$110,300	\$47,650	\$59,507	53.95	MODERATE INCOME	1,676	97.73	940	54.81	724	42.22	991	57.78	0	0	41.87	411	557	1	159	Neither
48	113	0088.01	19124	\$110,300	\$38,006	\$47,462	43.03	LOW INCOME	2,673	98.38	1,615	59.44	1,024	37.69	1,693	62.31	10	0.37	17.86	755	1,034	7	217	Neither
48	113	0088.02	19124	\$110,300	\$39,621	\$49,481	44.86	LOW INCOME	5,659	98.66	2,986	52.06	2,572	44.84	3,164	55.16	8	0.14	27.89	913	1,836	7	330	Neither
48	113	0090.01	19124	\$110,300	\$50,691	\$63,301	57.39	MODERATE INCOME	4,499	95.5	984	20.89	3,455	73.34	1,256	26.66	19	0.4	13.13	641	937	7	271	Neither
48	113	0090.02	19124	\$110,300	\$41,219	\$51,477	46.67	LOW INCOME	3,840	93.48	967	23.54	2,807	68.33	1,301	31.67	13	0.32	16.03	792	1,189	2	282	Neither
48	113	0091.01	19124	\$110,300	\$63,295	\$79,041	71.66	MODERATE INCOME	5,364	93.51	1,096	19.11	4,183	72.93	1,553	27.07	12	0.21	21.56	1,398	1,880	5	291	Neither
48	113	0091.03	19124	\$110,300	\$36,389	\$45,444	41.2	LOW INCOME	3,539	97.2	742	20.38	2,771	76.11	870	23.89	11	0.3	29.53	556	788	0	146	Neither
48	113	0091.04	19124	\$110,300	\$70,500	\$88,041	79.82	MODERATE INCOME	3,363	95.3	415	11.76	2,939	83.28	590	16.72	1	0.03	16.26	880	1,098	1	159	Neither
48	113	0091.05	19124	\$110,300	\$48,712	\$60,830	55.15	MODERATE INCOME	3,864	95.69	268	6.64	3,541	87.69	497	12.31	8	0.2	39.48	569	1,019	3	226	Neither
48	113	0092.02	19124	\$110,300	\$40,465	\$50,528	45.81	LOW INCOME	5,743	93.92	432	7.06	5,243	85.74	872	14.26	10	0.16	28.43	968	1,493	8	316	Neither
48	113	0092.03	19124	\$110,300	\$53,171	\$66,401	60.2	MODERATE INCOME	3,350	92.82	330	9.14	2,990	82.85	619	17.15	0	0	26.68	655	1,187	6	216	Neither
48	113	0092.04	19124	\$110,300	\$36,123	\$45,113	40.9	LOW INCOME	2,828	93.09	666	21.92	2,109	69.42	929	30.58	7	0.23	19.83	431	861	0	179	Neither
48	113	0093.01	19124	\$110,300	\$45,179	\$56,418	51.15	MODERATE INCOME	4,571	95.51	195	4.07	4,328	90.43	458	9.57	13	0.27	19.3	901	1,304	5	279	Neither
48	113	0093.03	19124	\$110,300	\$41,797	\$52,194	47.32	LOW INCOME	3,935	97.06	507	12.51	3,389	83.6	665	16.4	16	0.39	21.63	676	1,076	5	226	Neither
48	113	0093.04	19124	\$110,300	\$26,117	\$32,616	29.57	LOW INCOME	6,612	97.97	3,844	56.96	2,687	39.81	4,062	60.19	7	0.1	52.65	505	1,572	2	309	Neither
48	113	0094.01	19124	\$110,300	\$85,541	\$106,826	96.85	MIDDLE INCOME	2,170	62.23	82	2.35	1,914	54.89	1,573	45.11	77	2.21	11.34	996	1,379	16	323	Neither
48	113	0094.02	19124	\$110,300	\$175,565	\$219,265	198.79	UPPER INCOME	562	21.13	43	1.62	326	12.26	2,334	87.74	99	3.72	3.18	967	1,234	5	483	Neither
48	113	0095.00	19124	\$110,300	\$201,750	\$251,969	228.44	UPPER INCOME	511	21.52	29	1.22	259	10.91	2,116	89.09	117	4.93	3.95	788	958	10	538	Neither
48	113	0096.03	19124	\$110,300	\$176,607	\$220,567	199.97	UPPER INCOME	1,215	27.28	211	4.74	580	13.02	3,874	86.98	279	6.26	3.03	1,560	1,839	31	1,731	Neither
48	113	0096.04	19124	\$110,300	\$78,385	\$97,891	88.75	MIDDLE INCOME	2,455	51.05	478	9.94	1,700	35.35	3,109	64.65	192	3.99	15.51	1,163	1,278	24	2,807	Neither
48	113	0096.05	19124	\$110,300	\$66,019	\$82,449	74.75	MODERATE INCOME	2,838	81.76	251	7.23	2,392	68.91	1,079	31.09	136	3.92	1.92	441	810	4	1,187	Neither
48	113	0096.07	19124	\$110,300	\$124,464	\$155,446	140.93	UPPER INCOME	1,500	42.15	134	3.77	1,154	32.42	2,405	67.58	86	2.42	3.64	1,003	1,351	15	551	Neither
48	113	0096.08	19124	\$110,300	\$114,750	\$143,313	129.93	UPPER INCOME	1,197	37.2	123	3.82	787	24.46	2,431	75.54	125	3.88	0.42	957	1,029	6	520	Neither
48	113	0096.09	19124	\$110,300	\$172,955	\$216,000	195.83	UPPER INCOME	664	20.85	59	1.85	311	9.77	2,873	90.23	115	3.61	1.75	1,214	1,256	13	577	Neither
48	113	0096.10	19124	\$110,300	\$45,254	\$56,518	51.24	MODERATE INCOME	4,351	94.12	132	2.86	4,140	89.55	483	10.45	39	0.84	18.57	0	361	7	605	Neither
48	113	0096.11	19124	\$110,300	\$96,071	\$119,984	108.78	MIDDLE INCOME	2,759	78.9	220	6.29	2,297	65.68	1,200	34.32	160	4.58	5.63	1,031	1,270	3	388	Neither
48	113	0097.01	19124	\$110,300	\$70,750	\$88,361	80.11	MIDDLE INCOME	3,626	77.56	143	3.06	3,351	71.68	1,324	28.32	74	1.58	16.55	948	1,199	14	569	Neither
48	113	0097.02	19124	\$110,300	\$151,577	\$189,308	171.63	UPPER INCOME	994	30.63	96	2.96	693	21.36	2,552	78.64</								

48	113	0107.01	19124	\$110,300	\$40,648	\$50,760	46.02	LOW INCOME	5,194	93.7	637	11.49	4,463	80.52	1,080	19.48	21	0.38	29.77	413	808	7	461	Neither
48	113	0107.04	19124	\$110,300	\$35,833	\$44,749	40.57	LOW INCOME	5,027	95.9	1,463	27.91	3,441	65.64	1,801	34.36	101	1.93	38.27	607	1,147	3	259	Neither
48	113	0108.04	19124	\$110,300	\$38,232	\$47,749	43.29	LOW INCOME	4,443	95.45	1,471	31.6	2,858	61.4	1,797	38.6	10	0.21	33.8	343	783	3	255	Neither
48	113	0108.05	19124	\$110,300	\$53,829	\$67,228	60.95	MODERATE INCOME	5,318	95.34	1,455	26.08	3,769	67.57	1,809	32.43	50	0.9	22.48	790	1,228	4	348	Neither
48	113	0108.06	19124	\$110,300	\$96,473	\$120,481	109.23	MIDDLE INCOME	2,758	78.53	1,011	28.79	1,639	46.67	1,873	53.33	12	0.34	4.72	1,218	1,332	8	371	Neither
48	113	0108.07	19124	\$110,300	\$58,333	\$72,853	66.05	MODERATE INCOME	3,759	92.27	1,444	35.44	2,193	53.83	1,881	46.17	55	1.35	34.23	606	1,027	1	252	Neither
48	113	0108.08	19124	\$110,300	\$36,795	\$45,951	41.66	LOW INCOME	3,471	95.99	566	15.65	2,829	78.24	787	21.76	30	0.83	16.98	646	772	1	120	Neither
48	113	0108.09	19124	\$110,300	\$41,691	\$52,062	47.2	LOW INCOME	5,331	94.69	740	13.14	4,324	76.8	1,306	23.2	192	3.41	16.46	877	1,497	0	294	Neither
48	113	0109.03	19124	\$110,300	\$40,145	\$50,131	45.45	LOW INCOME	3,218	95.55	1,965	58.34	1,185	35.18	2,183	64.82	14	0.42	21.16	329	654	4	409	Neither
48	113	0109.04	19124	\$110,300	\$33,974	\$42,421	38.46	LOW INCOME	3,622	97.52	2,704	72.81	828	22.29	2,886	77.71	27	0.73	29.87	35	429	3	853	Neither
48	113	0109.05	19124	\$110,300	\$30,938	\$38,638	35.03	LOW INCOME	2,429	97.12	2,173	86.89	219	8.76	2,282	91.24	4	0.16	41.47	0	298	0	66	Neither
48	113	0109.06	19124	\$110,300	\$51,729	\$64,603	58.57	MODERATE INCOME	4,398	97.13	3,074	67.89	1,225	27.05	3,303	72.95	9	0.2	62.3	846	1,213	1	362	Neither
48	113	0110.02	19124	\$110,300	\$55,909	\$69,820	63.3	MODERATE INCOME	2,909	93.87	2,030	65.51	824	26.59	2,275	73.41	6	0.19	19.85	1,130	1,517	5	384	Neither
48	113	0110.03	19124	\$110,300	\$68,672	\$85,758	77.75	MODERATE INCOME	4,025	95.36	3,098	73.39	840	19.9	3,381	80.1	7	0.17	26.47	1,659	1,873	6	413	Neither
48	113	0110.04	19124	\$110,300	\$45,250	\$56,507	51.23	MODERATE INCOME	2,365	95.63	1,825	73.8	479	19.37	1,994	80.63	1	0.04	17.82	317	580	2	155	Neither
48	113	0111.01	19124	\$110,300	\$69,853	\$87,236	79.09	MODERATE INCOME	4,256	95.47	3,318	74.43	833	18.69	3,625	81.31	27	0.61	10.19	1,251	1,648	5	561	Neither
48	113	0111.03	19124	\$110,300	\$42,616	\$53,220	48.25	LOW INCOME	3,770	95.49	1,435	36.35	2,288	57.95	1,660	42.05	8	0.2	32.09	738	1,264	4	268	Neither
48	113	0111.04	19124	\$110,300	\$34,452	\$43,028	39.01	LOW INCOME	3,771	98.1	2,204	57.34	1,511	39.31	2,333	60.69	9	0.23	29.38	1,044	1,556	8	250	Neither
48	113	0111.05	19124	\$110,300	\$44,012	\$54,962	49.83	LOW INCOME	4,653	98.46	2,434	51.5	2,159	45.68	2,567	54.32	9	0.19	26.02	547	1,024	0	219	Neither
48	113	0112.01	19124	\$110,300	\$53,129	\$66,345	60.15	MODERATE INCOME	3,873	97.07	2,765	69.3	1,004	25.16	2,986	74.84	27	0.68	26.48	738	1,274	2	275	Neither
48	113	0112.02	19124	\$110,300	\$62,308	\$77,817	70.55	MODERATE INCOME	2,847	98.51	1,941	67.16	866	29.97	2,024	70.03	10	0.35	21.88	656	996	5	297	Neither
48	113	0113.00	19124	\$110,300	\$53,229	\$66,478	60.27	MODERATE INCOME	5,327	98.34	4,228	78.05	1,003	18.52	4,414	81.48	4	0.07	24.75	1,443	2,097	12	497	Neither
48	113	0114.01	19124	\$110,300	\$34,026	\$42,488	38.52	LOW INCOME	5,845	98.48	4,555	76.75	1,154	19.44	4,781	80.56	15	0.25	41.31	643	1,444	8	300	Neither
48	113	0115.00	19124	\$110,300	\$24,539	\$30,641	27.78	LOW INCOME	4,544	99.04	1,736	37.84	2,735	59.61	1,853	40.39	13	0.28	32.47	396	992	2	173	Neither
48	113	0116.01	19124	\$110,300	\$37,771	\$47,164	42.76	LOW INCOME	4,314	96.04	1,975	43.97	2,281	50.78	2,211	49.22	14	0.31	29.55	592	1,200	4	236	Neither
48	113	0116.03	19124	\$110,300	\$56,013	\$69,952	63.42	MODERATE INCOME	3,456	93.18	207	5.58	3,190	86.01	519	13.99	51	1.38	16.88	551	885	1	183	Neither
48	113	0116.04	19124	\$110,300	\$59,414	\$74,199	67.27	MODERATE INCOME	3,566	90.53	578	14.67	2,910	73.88	1,029	26.12	17	0.43	24.84	672	974	5	187	Neither
48	113	0117.01	19124	\$110,300	\$42,059	\$52,525	47.62	LOW INCOME	6,114	95.23	1,171	18.24	4,873	75.9	1,547	24.1	7	0.11	29.96	1,403	1,900	7	301	Neither
48	113	0117.02	19124	\$110,300	\$57,050	\$71,243	64.59	MODERATE INCOME	5,155	90.38	513	8.99	4,547	79.72	1,157	20.28	41	0.72	14.13	1,247	1,615	6	424	Neither
48	113	0118.01	19124	\$110,300	\$40,838	\$51,003	46.24	LOW INCOME	5,289	93.91	1,706	30.29	3,465	61.52	2,167	38.48	9	0.16	26.95	771	1,166	2	280	Neither
48	113	0118.02	19124	\$110,300	\$51,867	\$64,768	58.72	MODERATE INCOME	4,121	95.04	502	11.58	3,579	82.54	757	17.46	10	0.23	22.23	933	1,112	1	164	Neither
48	113	0119.01	19124	\$110,300	\$49,256	\$61,514	55.77	MODERATE INCOME	4,550	95.37	1,158	24.27	3,316	69.5	1,455	30.5	17	0.36	18.31	864	1,231	3	213	Neither
48	113	0119.02	19124	\$110,300	\$52,323	\$65,342	59.24	MODERATE INCOME	4,876	94.4	957	18.53	3,866	74.85	1,299	25.15	12	0.23	27	896	1,269	2	332	Neither
48	113	0120.00	19124	\$110,300	\$38,795	\$48,444	43.92	LOW INCOME	10,872	95.51	4,265	37.47	6,439	56.57	4,944	43.43	21	0.18	26.73	845	1,415	4	307	Neither
48	113	0121.01	19124	\$110,300	\$33,350	\$41,649	37.76	LOW INCOME	3,486	96.65	2,002	55.5	1,436	39.81	2,171	60.19	15	0.42	32.49	232	435	2	137	Neither
48	113	0121.02	19124	\$110,300	\$44,375	\$55,415	50.24	MODERATE INCOME	3,115	95.14	991	30.27	2,049	62.58	1,225	37.42	45	1.37	20.63	585	910	4	206	Neither
48	113	0122.06	19124	\$110,300	\$78,750	\$98,343	89.16	MIDDLE INCOME	3,846	79.63	1,770	36.65	1,889	39.11	2,941	60.89	54	1.12	12.44	1,588	1,839	6	569	Neither
48	113	0122.07	19124	\$110,300	\$45,716	\$57,091	51.76	MODERATE INCOME	6,813	93.92	2,968	40.92	3,616	49.85	3,638	50.15	141	1.94	13.05	950	1,479	10	859	Neither
48	113	0122.08	19124	\$110,300	\$29,313	\$36,609	33.19	LOW INCOME	2,437	96.32	960	37.94	1,450	57.31	1,080	42.69	5	0.2	37.49	0	61	1	64	Neither
48	113	0122.09	19124	\$110,300	\$87,188	\$108,888	98.72	MIDDLE INCOME	1,320	48.82	436	16.12	701	25.92	2,003	74.08	71	2.63	11.64	549	781	7	311	Neither
48	113	0122.10	19124	\$110,300	\$55,000	\$68,684	62.27	MODERATE INCOME	3,241	82.47	1,617	41.15	1,473	37.48	2,457	62.52	34	0.87	29.79	336	594	4	238	Neither
48	113	0122.11	19124	\$110,300	\$35,337	\$44,131	40.01	LOW INCOME	4,022	89.12	1,531	33.92	2,328	51.58	2,185	48.42	82	1.82	19.33	372	589	3	252	Neither
48	113	0122.12	19124	\$110,300	\$58,098	\$72,555	65.78	MODERATE INCOME	2,553	73.74	663	19.15	1,739	50.23	1,723	49.77	38	1.1	17.67	833	1,312	8	434	Neither
48	113	0122.13	19124	\$110,300	\$92,703	\$115,771	104.96	MIDDLE INCOME	1,129	46.96	356	14.81	639	26.58	1,765	73.42	8	2	0.66	946	1,022	8	250	Neither
48	113	0123.01	19124	\$110,300	\$67,974	\$84,887	76.96	MODERATE INCOME	4,020	84.67	494	10.4	3,389	71.38	1,359	28.62	42	0.88	14.21	956	1,312	4	215	Neither
48	113	0123.02	19124	\$110,300	\$35,393	\$44,197	40.07	LOW INCOME	7,354	90.88	3,051	37.7	3,947	48.78	4,145	51.22	190	2.35	38.64	888	1,400	9	387	Neither
48	113	0124.00	19124	\$110,300	\$58,845	\$73,493	66.63	MODERATE INCOME	2,566	49.77	162	3.14	2,152	41.74	3,004	58.26	55	1.07	12.47	1,775	2,250	10	555	Neither
48	113	0125.01	19124	\$110,300	\$68,403	\$85,427	77.45	MODERATE INCOME	2,866	78.01	148	4.03	2,638	71.8	1,036	28.2	25	0.68	21.45	924	1,204	5	174	Neither
48	113	0125.02	19124	\$110,300	\$41,404	\$51,709	46.88	LOW INCOME	3,344	81.34	170	4.14	3,056	74.34	1,055	25.66	40	0.97	11.9	647	1,190	1	206	Neither
48	113	0126.01	19124	\$110,300	\$46,186	\$57,676	52.29	MODERATE INCOME	5,131	88.73	827	14.3	3,649	63.1	2,134	36.9	539	9.32	11.1	1,028	1,377	7	394	Neither
48	113	0126.03	19124	\$110,300	\$86,645	\$108,204	98.1	MIDDLE INCOME	1,429	70.74	98	4.85	1,256	62.18	764	37.82	31	1.53	11.92	545	667	4	139	Neither
48	113	0126.04	19124	\$110,300	\$43,517	\$54,345	49.27	LOW INCOME	4,557	81	2,085	37.06	2,151	38.23	3,475	61.77	151	2.68	27.35	364	659	2	289	Neither
48	113	0127.01	19124	\$110,300	\$48,658	\$																		

48	113	0141.38	19124	\$110,300	\$116,066	\$144,956	131.42	UPPER INCOME	3,545	76.71	413	8.94	397	8.59	4,224	91.41	2,594	56.14	1.59	396	447	11	578	Neither
48	113	0141.39	19124	\$110,300	\$79,924	\$99,810	90.49	MIDDLE INCOME	2,530	85.79	1,037	35.16	760	25.77	2,189	74.23	638	21.63	7.76	255	522	3	207	Neither
48	113	0141.40	19124	\$110,300	\$57,122	\$71,331	64.67	MODERATE INCOME	2,007	86.17	630	27.05	433	18.59	1,896	81.41	876	37.61	17.28	224	336	0	130	Neither
48	113	0141.41	19124	\$110,300	\$82,212	\$102,667	93.08	MIDDLE INCOME	1,531	71.41	328	15.3	268	12.5	1,876	87.5	876	40.86	9.59	253	419	8	370	Neither
48	113	0141.42	19124	\$110,300	\$0	\$0	0	NA	1,750	75.43	658	28.36	357	15.39	1,963	84.61	651	28.06	17.96	261	402	9	177	Neither
48	113	0141.43	19124	\$110,300	\$128,846	\$160,917	145.89	UPPER INCOME	3,635	77.64	476	10.17	454	9.7	4,228	90.3	2,550	54.46	7.47	701	970	6	879	Neither
48	113	0141.44	19124	\$110,300	\$84,258	\$105,226	95.4	MIDDLE INCOME	4,056	74.14	775	14.17	767	14.02	4,704	85.98	2,368	43.28	8.55	185	263	4	782	Neither
48	113	0141.45	19124	\$110,300	\$56,058	\$70,007	63.47	MODERATE INCOME	1,221	85.74	642	45.08	279	19.59	1,145	80.41	260	18.26	3.38	36	70	0	120	Neither
48	113	0141.46	19124	\$110,300	\$51,117	\$63,842	57.88	MODERATE INCOME	2,038	90.3	528	23.39	469	20.78	1,788	79.22	993	44	15.66	51	235	0	116	Neither
48	113	0141.47	19124	\$110,300	\$40,116	\$50,098	45.42	LOW INCOME	1,853	88.03	858	40.76	607	28.84	1,498	71.16	292	13.87	21.19	0	240	1	148	Neither
48	113	0141.48	19124	\$110,300	\$78,235	\$97,704	88.58	MIDDLE INCOME	2,909	86.4	905	26.88	678	20.14	2,689	79.86	1,184	35.16	7.67	275	454	3	687	Neither
48	113	0141.49	19124	\$110,300	\$122,679	\$153,218	138.91	UPPER INCOME	3,122	85.6	460	12.61	341	9.35	3,306	90.65	2,215	60.73	2.88	161	261	2	374	Neither
48	113	0141.50	19124	\$110,300	\$121,163	\$151,321	137.19	UPPER INCOME	1,544	92.12	89	5.31	79	4.71	1,597	95.29	1,354	80.79	2.33	350	414	3	541	Neither
48	113	0141.51	19124	\$110,300	\$111,171	\$138,846	125.88	UPPER INCOME	4,025	90.98	315	7.12	292	6.6	4,132	93.4	3,338	75.45	7.99	270	382	5	529	Neither
48	113	0141.52	19124	\$110,300	\$82,083	\$102,513	92.94	MIDDLE INCOME	2,811	83.44	473	14.04	465	13.8	2,904	86.2	1,780	52.83	7.38	0	129	2	423	Neither
48	113	0141.53	19124	\$110,300	\$44,729	\$55,856	50.64	MODERATE INCOME	3,115	78.23	535	13.44	2,072	52.03	1,910	47.97	404	10.15	5.95	961	1,113	10	629	Neither
48	113	0141.54	19124	\$110,300	\$91,250	\$113,962	103.32	MIDDLE INCOME	2,839	80.54	762	21.62	1,429	40.54	2,096	59.46	555	15.74	1.59	621	935	5	221	Neither
48	113	0141.55	19124	\$110,300	\$120,224	\$150,151	136.13	UPPER INCOME	4,566	83.98	633	11.64	479	8.81	4,958	91.19	3,274	60.22	7.13	540	722	9	427	Neither
48	113	0141.56	19124	\$110,300	\$149,009	\$186,098	168.72	UPPER INCOME	3,641	87.57	140	3.37	190	4.57	3,968	95.43	3,198	76.91	1.85	933	1,039	9	874	Neither
48	113	0141.57	19124	\$110,300	\$84,250	\$105,215	95.39	MIDDLE INCOME	1,302	68.03	354	18.5	253	13.22	1,661	86.78	640	33.44	6.39	0	293	0	480	Neither
48	113	0141.58	19124	\$110,300	\$44,891	\$56,065	50.83	MODERATE INCOME	2,792	90.36	1,254	40.58	959	31.04	2,131	68.96	480	15.53	33.44	11	253	5	537	Neither
48	113	0141.59	19124	\$110,300	\$174,762	\$218,262	197.88	UPPER INCOME	2,897	96.12	76	2.52	57	1.89	2,957	98.11	2,724	90.38	2.07	471	563	8	2,074	Neither
48	113	0141.60	19124	\$110,300	\$67,466	\$84,258	76.39	MODERATE INCOME	2,184	79.13	574	20.8	378	13.7	2,382	86.3	1,115	40.4	7.61	452	555	0	350	Neither
48	113	0141.61	19124	\$110,300	\$46,704	\$58,327	52.88	MODERATE INCOME	2,685	86	1,538	49.26	678	21.72	2,444	78.28	362	11.6	4.6	52	367	2	191	Neither
48	113	0142.03	19124	\$110,300	\$74,630	\$93,204	84.5	MIDDLE INCOME	2,132	61.96	122	3.55	1,719	49.96	1,722	50.04	144	4.18	3.44	623	830	3	366	Neither
48	113	0142.04	19124	\$110,300	\$47,396	\$59,187	53.66	MODERATE INCOME	2,251	77.49	358	12.32	1,302	44.82	1,603	55.18	499	17.18	20.74	165	289	1	337	Neither
48	113	0142.05	19124	\$110,300	\$141,000	\$176,094	159.65	UPPER INCOME	771	40.05	91	4.73	222	11.53	1,703	88.47	383	19.9	5.4	618	675	9	1,614	Neither
48	113	0142.07	19124	\$110,300	\$161,699	\$201,948	183.09	UPPER INCOME	1,596	60.09	500	18.83	460	17.32	2,196	82.68	510	19.2	1.26	0	38	4	819	Neither
48	113	0142.08	19124	\$110,300	\$71,563	\$89,376	81.03	MIDDLE INCOME	1,499	55.4	463	17.11	482	17.81	2,224	82.19	412	15.23	3.34	173	56	2	1,294	Neither
48	113	0142.09	19124	\$110,300	\$116,483	\$145,475	131.89	UPPER INCOME	2,439	60.27	808	19.97	750	18.53	3,297	81.47	704	17.4	3.07	81	103	7	712	Neither
48	113	0143.06	19124	\$110,300	\$63,516	\$79,317	71.91	MODERATE INCOME	4,807	80.41	314	5.25	4,159	69.57	1,819	30.43	228	3.81	9.31	1,356	1,745	2	542	Neither
48	113	0143.08	19124	\$110,300	\$47,046	\$58,757	53.27	MODERATE INCOME	3,636	85.05	575	13.45	2,678	62.64	1,597	37.36	277	6.48	10.93	139	410	2	304	Neither
48	113	0143.09	19124	\$110,300	\$41,855	\$52,271	47.39	LOW INCOME	4,615	92.3	1,276	25.52	2,602	52.04	2,398	47.96	628	12.56	23.28	112	411	0	331	Neither
48	113	0143.10	19124	\$110,300	\$77,664	\$96,987	87.93	MIDDLE INCOME	3,770	75.93	1,518	30.57	1,520	30.61	3,445	69.39	542	10.92	9.6	703	1,103	7	446	Neither
48	113	0143.13	19124	\$110,300	\$87,468	\$109,241	99.04	MIDDLE INCOME	2,528	70.58	610	17.03	497	13.87	3,085	86.13	1,296	36.18	5.83	186	259	9	900	Neither
48	113	0143.14	19124	\$110,300	\$106,585	\$133,110	120.68	UPPER INCOME	1,808	58.27	501	16.15	586	18.88	2,517	81.12	593	19.11	1.05	342	493	4	581	Neither
48	113	0143.15	19124	\$110,300	\$69,803	\$87,170	79.03	MODERATE INCOME	2,420	76.44	122	3.85	2,149	67.88	1,017	32.12	83	2.62	6.82	335	583	5	393	Neither
48	113	0143.16	19124	\$110,300	\$61,632	\$76,967	69.78	MODERATE INCOME	2,727	69.6	158	4.03	2,346	59.88	1,572	40.12	111	2.83	6.5	1,003	1,115	6	286	Neither
48	113	0143.17	19124	\$110,300	\$87,770	\$109,616	99.38	MIDDLE INCOME	1,076	65.33	348	21.13	396	24.04	1,251	75.96	245	14.88	2.82	329	262	0	142	Neither
48	113	0143.18	19124	\$110,300	\$89,856	\$112,219	101.74	MIDDLE INCOME	1,463	51.93	204	7.24	967	34.33	1,850	65.67	186	6.6	4.19	430	694	6	264	Neither
48	113	0143.19	19124	\$110,300	\$58,889	\$73,548	66.68	MODERATE INCOME	2,416	90.69	474	17.79	321	12.05	2,343	87.95	1,553	58.3	6.52	0	35	1	383	Neither
48	113	0143.20	19124	\$110,300	\$103,464	\$129,216	117.15	MIDDLE INCOME	2,490	90.64	354	12.89	261	9.5	2,486	90.5	1,802	65.6	2.36	69	108	0	132	Neither
48	113	0144.05	19124	\$110,300	\$52,792	\$65,926	59.77	MODERATE INCOME	3,326	82.37	199	4.93	2,965	73.43	1,073	26.57	88	2.18	17.15	569	683	5	440	Neither
48	113	0144.06	19124	\$110,300	\$60,282	\$75,280	68.25	MODERATE INCOME	3,660	78.1	186	3.97	3,261	69.59	1,425	30.41	84	1.79	19.06	654	1,030	2	551	Neither
48	113	0144.07	19124	\$110,300	\$48,813	\$60,963	55.27	MODERATE INCOME	4,838	88.59	999	18.29	3,444	63.07	2,017	36.93	281	5.15	12.68	417	688	4	376	Neither
48	113	0144.08	19124	\$110,300	\$59,271	\$74,022	67.11	MODERATE INCOME	3,377	77.22	724	16.56	2,096	47.93	2,277	52.07	421	9.63	16.8	777	1,102	7	522	Neither
48	113	0144.09	19124	\$110,300	\$41,094	\$51,323	46.53	LOW INCOME	2,114	88.23	855	35.68	1,055	44.03	1,341	55.97	122	5.09	14.98	237	384	2	199	Neither
48	113	0144.10	19124	\$110,300	\$51,250	\$64,007	58.03	MODERATE INCOME	2,266	83.34	813	29.9	852	31.34	1,867	68.66	512	18.83	13.76	8	108	0	159	Neither
48	113	0145.01	19124	\$110,300	\$101,435	\$126,680	114.85	MIDDLE INCOME	2,340	67.42	162	4.67	1,942	55.95	1,529	44.05	71	2.05	10.43	1,072	1,242	6	506	Neither
48	113	0145.02	19124	\$110,300	\$55,257	\$69,004	62.56	MODERATE INCOME	3,383	74.99	230	5.1	2,972	65.88	1,539	34.12	73	1.62	12.17	514	861	6	490	Neither
48	113	0146.01	19124	\$110,300	\$53,548	\$66,875	60.63	MODERATE INCOME	1,834	73.86	157	6.32	1,528	61.54	955	38.46	87	3.5	13.31	269	510	12	351	Neither
48	113	0146.02	19124	\$110,300	\$55,521	\$69,335	62.86	MODERATE INCOME	4,383	89.76	230	4.71	3,872	79.3	1,011	20.7	212	4.34	16.51	554	988	4	330	Neither
48	113	0146.03	19124	\$110,300	\$56,000	\$69,930	63.4	MODERATE INCOME	1,696	89.74	100	5.29	1,507											

48	113	0153.03	19124	\$110,300	\$47,043	\$58,746	53.26	MODERATE INCOME	1,688	85.55	77	3.9	1,550	78.56	423	21.44	11	0.56	8.48	295	521	8	276	Neither
48	113	0153.04	19124	\$110,300	\$46,164	\$57,654	52.27	MODERATE INCOME	3,285	82.41	121	3.04	2,909	72.98	1,077	27.02	167	4.19	21.86	1,029	1,229	5	377	Neither
48	113	0153.05	19124	\$110,300	\$66,627	\$83,210	75.44	MODERATE INCOME	3,481	78.05	428	9.6	2,760	61.88	1,700	38.12	185	4.15	16.68	832	1,254	9	400	Neither
48	113	0153.06	19124	\$110,300	\$85,264	\$106,484	96.54	MIDDLE INCOME	4,167	74.96	483	8.69	2,338	42.06	3,221	57.94	1,141	20.53	11.66	1,429	1,736	10	362	Neither
48	113	0154.03	19124	\$110,300	\$58,947	\$73,614	66.74	MODERATE INCOME	2,863	80.63	669	18.84	2,023	56.97	1,528	43.03	59	1.66	19.48	276	573	1	208	Neither
48	113	0154.04	19124	\$110,300	\$40,517	\$50,595	45.87	LOW INCOME	3,955	88.96	1,189	26.74	2,637	59.31	1,809	40.69	45	1.01	32.41	422	985	3	372	Neither
48	113	0154.05	19124	\$110,300	\$84,063	\$104,984	95.18	MIDDLE INCOME	1,500	64.6	508	21.88	799	34.41	1,523	65.59	84	3.62	10.35	553	822	0	213	Neither
48	113	0154.06	19124	\$110,300	\$98,060	\$122,466	111.03	MIDDLE INCOME	1,982	56.55	612	17.46	1,140	32.52	2,365	67.48	87	2.48	1.24	886	1,002	11	290	Neither
48	113	0155.00	19124	\$110,300	\$73,872	\$92,255	83.64	MIDDLE INCOME	2,803	77.77	316	8.77	2,366	65.65	1,238	34.35	41	1.14	12.13	567	741	8	674	Neither
48	113	0156.00	19124	\$110,300	\$53,914	\$67,327	61.04	MODERATE INCOME	4,519	88.83	104	2.04	4,378	86.06	709	13.94	7	0.14	21.9	1,069	1,627	7	347	Neither
48	113	0157.00	19124	\$110,300	\$57,443	\$71,739	65.04	MODERATE INCOME	2,220	88.84	31	1.24	2,125	85.03	374	14.97	24	0.96	17.87	475	759	4	413	Neither
48	113	0159.00	19124	\$110,300	\$47,798	\$59,694	54.12	MODERATE INCOME	2,899	82.62	541	15.42	2,230	63.55	1,279	36.45	60	1.71	19.22	361	1,255	2	215	Neither
48	113	0160.01	19124	\$110,300	\$40,982	\$51,179	46.4	LOW INCOME	3,974	85.94	197	4.26	3,655	79.04	969	20.96	25	0.54	30.55	829	1,329	6	295	Neither
48	113	0160.02	19124	\$110,300	\$32,344	\$40,392	36.62	LOW INCOME	2,466	83.74	318	10.8	2,094	71.1	851	28.9	15	0.51	49.28	301	666	5	207	Neither
48	113	0161.00	19124	\$110,300	\$46,250	\$57,753	52.36	MODERATE INCOME	3,075	79.52	1,130	29.22	1,835	47.45	2,032	52.55	53	1.37	20.74	675	1,174	5	612	Neither
48	113	0162.01	19124	\$110,300	\$70,192	\$87,655	79.47	MODERATE INCOME	3,780	82.82	408	8.94	3,186	69.81	1,378	30.19	90	1.97	2.4	865	1,041	4	223	Neither
48	113	0162.03	19124	\$110,300	\$43,958	\$54,896	49.77	LOW INCOME	1,982	90.54	510	23.3	1,414	64.6	775	35.4	36	1.64	22.79	0	29	2	199	Neither
48	113	0162.04	19124	\$110,300	\$47,017	\$58,713	53.23	MODERATE INCOME	3,313	79.72	159	3.83	2,991	71.97	1,165	28.03	73	1.76	16.04	1,071	1,415	5	284	Neither
48	113	0163.01	19124	\$110,300	\$64,886	\$81,037	73.47	MODERATE INCOME	6,087	89.5	648	9.53	4,879	71.74	1,922	28.26	437	6.43	9.42	1,866	2,210	10	386	Neither
48	113	0163.02	19124	\$110,300	\$41,797	\$52,194	47.32	LOW INCOME	1,881	88.6	130	6.12	1,620	76.31	503	23.69	103	4.85	20.44	331	534	0	117	Neither
48	113	0164.06	19124	\$110,300	\$71,650	\$89,486	81.13	MIDDLE INCOME	4,291	87.23	815	16.57	3,184	64.73	1,735	35.27	143	2.91	10.14	799	1,383	10	356	Neither
48	113	0164.07	19124	\$110,300	\$59,200	\$73,934	67.03	MODERATE INCOME	5,702	83.9	938	13.8	4,433	65.23	2,363	34.77	169	2.49	13.77	1,170	1,740	3	351	Neither
48	113	0164.09	19124	\$110,300	\$111,840	\$139,673	126.63	UPPER INCOME	2,621	68.11	872	22.66	1,284	33.37	2,564	66.63	290	7.54	2.39	1,157	1,285	1	444	Neither
48	113	0164.10	19124	\$110,300	\$89,800	\$112,153	101.68	MIDDLE INCOME	3,099	72.68	926	21.72	1,515	35.53	2,749	64.47	499	11.7	18.1	1,305	1,800	5	529	Neither
48	113	0164.12	19124	\$110,300	\$128,228	\$160,145	145.19	UPPER INCOME	3,248	72.39	1,123	25.03	1,284	28.62	3,203	71.38	639	14.24	2.12	1,666	1,937	3	522	Neither
48	113	0164.14	19124	\$110,300	\$114,023	\$142,397	129.1	UPPER INCOME	1,775	82.06	859	39.71	572	26.44	1,591	73.56	274	12.67	2.17	104	154	1	270	Neither
48	113	0164.15	19124	\$110,300	\$114,451	\$142,938	129.59	UPPER INCOME	3,716	76.49	1,312	27.01	1,650	33.96	3,208	66.04	630	12.97	12.53	1,396	1,551	5	408	Neither
48	113	0164.16	19124	\$110,300	\$59,375	\$74,155	67.23	MODERATE INCOME	2,585	82.96	1,178	37.8	896	28.75	2,220	71.25	411	13.19	9.84	830	882	2	395	Neither
48	113	0164.17	19124	\$110,300	\$81,979	\$102,380	92.82	MIDDLE INCOME	4,684	75.39	1,280	20.6	2,636	42.43	3,577	57.57	602	9.69	12.74	1,537	1,865	9	447	Neither
48	113	0164.18	19124	\$110,300	\$75,521	\$94,318	85.51	MIDDLE INCOME	3,952	83.66	1,518	32.13	1,835	38.84	2,889	61.16	490	10.37	2.68	1,293	1,350	5	387	Neither
48	113	0164.19	19124	\$110,300	\$75,865	\$94,748	85.9	MIDDLE INCOME	4,599	83.32	1,095	19.84	2,796	50.65	2,724	49.35	539	9.76	8.26	1,157	1,549	4	658	Neither
48	113	0164.20	19124	\$110,300	\$105,161	\$131,334	119.07	MIDDLE INCOME	2,560	80.81	413	13.04	1,859	58.68	1,309	41.32	187	5.9	2.34	851	1,064	9	214	Neither
48	113	0164.21	19124	\$110,300	\$60,038	\$74,982	67.98	MODERATE INCOME	2,825	73.88	574	15.01	2,055	53.74	1,769	46.26	79	2.07	7.78	852	1,178	2	179	Neither
48	113	0165.11	19124	\$110,300	\$67,250	\$83,982	76.14	MODERATE INCOME	3,906	90.1	2,344	54.07	1,379	31.81	2,956	68.19	63	1.45	9.5	1,134	1,510	5	352	Neither
48	113	0165.13	19124	\$110,300	\$107,128	\$133,794	121.3	UPPER INCOME	3,608	68.4	1,923	36.45	1,365	25.88	3,910	74.12	145	2.75	7.35	1,826	1,994	12	989	Neither
48	113	0165.16	19124	\$110,300	\$52,051	\$65,000	58.93	MODERATE INCOME	4,661	82.69	1,424	25.26	3,051	54.12	2,586	45.88	62	1.1	17.07	1,102	1,539	4	704	Neither
48	113	0165.17	19124	\$110,300	\$62,128	\$77,585	70.34	MODERATE INCOME	3,770	81.92	1,517	32.96	2,132	46.33	2,470	53.67	43	0.93	15.37	755	1,290	6	556	Neither
48	113	0165.18	19124	\$110,300	\$43,750	\$54,632	49.53	LOW INCOME	4,250	79.44	1,567	29.29	2,515	47.01	2,835	52.99	50	0.93	8.13	871	1,302	6	518	Neither
48	113	0165.19	19124	\$110,300	\$75,050	\$93,722	84.97	MIDDLE INCOME	1,669	67.14	394	15.85	1,161	46.7	1,325	53.3	28	1.13	9.18	586	778	4	478	Neither
48	113	0165.21	19124	\$110,300	\$72,500	\$90,545	82.09	MIDDLE INCOME	5,685	72.94	3,041	39.02	2,087	26.78	5,707	73.22	254	3.26	12.94	886	1,126	4	520	Neither
48	113	0165.22	19124	\$110,300	\$64,838	\$80,971	73.41	MODERATE INCOME	2,324	62.81	1,261	34.08	833	22.51	2,867	77.49	71	1.92	23.2	903	1,558	8	1,010	Neither
48	113	0165.24	19124	\$110,300	\$124,444	\$155,413	140.9	UPPER INCOME	1,599	51.95	707	22.97	608	19.75	2,470	80.25	137	4.45	5.86	696	954	14	722	Neither
48	113	0165.25	19124	\$110,300	\$131,932	\$164,766	149.38	UPPER INCOME	1,783	72.72	1,044	42.58	465	18.96	1,987	81.04	198	8.08	0.97	674	674	4	454	Neither
48	113	0165.26	19124	\$110,300	\$51,054	\$63,753	57.8	MODERATE INCOME	3,325	89.62	1,542	41.56	1,645	44.34	2,065	55.66	44	1.19	8.13	739	1,456	2	222	Neither
48	113	0165.27	19124	\$110,300	\$66,376	\$82,890	75.15	MODERATE INCOME	3,841	88.79	1,650	38.14	1,855	42.88	2,471	57.12	212	4.9	15.79	1,361	1,618	5	343	Neither
48	113	0165.28	19124	\$110,300	\$63,723	\$79,581	72.15	MODERATE INCOME	4,199	85.82	2,221	45.39	1,569	32.07	3,324	67.93	261	5.33	0.79	1,304	1,423	7	588	Neither
48	113	0165.29	19124	\$110,300	\$76,475	\$95,509	86.59	MIDDLE INCOME	2,905	86.1	1,646	48.78	1,058	31.36	2,316	68.64	102	3.02	8.28	1,040	1,129	6	337	Neither
48	113	0165.30	19124	\$110,300	\$74,013	\$92,431	83.8	MIDDLE INCOME	3,453	80.75	2,060	48.18	1,151	26.92	3,125	73.08	112	2.62	3.34	949	1,207	2	472	Neither
48	113	0165.31	19124	\$110,300	\$77,432	\$96,700	87.67	MIDDLE INCOME	2,690	78.54	1,308	38.19	1,256	36.67	2,169	63.33	49	1.43	7.09	572	1,078	8	411	Neither
48	113	0165.32	19124	\$110,300	\$102,125	\$127,540	115.63	MIDDLE INCOME	1,711	68.63	476	19.09	1,113	44.65	1,380	55.35	33	1.32	3.22	665	749	7	200	Neither
48	113	0165.33	19124	\$110,300	\$52,396	\$65,430	59.32	MODERATE INCOME	3,420	88.56	581	15.04	2,539	65.74	1,323	34.26	261	6.76	15.1	586	888	6	252	Neither
48	113	0165.34	19124	\$110,300	\$48,545	\$60,621	54.96	MODERATE INCOME	3,407	94.96	1,391	38.77	1,880	52.4	1,708	47.6	92	2.56	21.45	293	769	5	382	Neither

48	113	0166.24	19124	\$110,300	\$85,987	\$107,388	97.36	MIDDLE INCOME	3,054	88.88	2,236	65.08	713	20.75	2,723	79.25	46	1.34	3.73	708	1,100	8	358	Neither
48	113	0166.26	19124	\$110,300	\$54,271	\$67,779	61.45	MODERATE INCOME	4,379	87.25	2,731	54.41	1,423	28.35	3,596	71.65	76	1.51	16.05	759	1,287	1	490	Neither
48	113	0166.27	19124	\$110,300	\$80,075	\$99,998	90.66	MIDDLE INCOME	1,451	87.57	1,001	60.41	410	24.74	1,247	75.26	20	1.21	0	550	632	1	278	Neither
48	113	0166.28	19124	\$110,300	\$82,409	\$102,921	93.31	MIDDLE INCOME	4,702	91.64	3,812	74.29	776	15.12	4,355	84.88	24	0.47	3.82	850	1,030	5	515	Neither
48	113	0166.29	19124	\$110,300	\$87,604	\$109,407	99.19	MIDDLE INCOME	2,701	85.53	1,787	56.59	805	25.49	2,353	74.51	37	1.17	15.78	553	689	5	564	Neither
48	113	0166.30	19124	\$110,300	\$101,761	\$127,088	115.22	MIDDLE INCOME	5,798	92.21	4,502	71.6	1,026	16.32	5,262	83.68	95	1.51	3.33	1,386	1,794	10	660	Neither
48	113	0166.31	19124	\$110,300	\$144,063	\$179,921	163.12	UPPER INCOME	4,704	92.47	3,931	77.28	566	11.13	4,521	88.87	52	1.02	9.46	1,408	1,713	5	667	Neither
48	113	0166.32	19124	\$110,300	\$81,099	\$101,277	91.82	MIDDLE INCOME	2,850	87.85	2,078	64.06	684	21.09	2,560	78.91	17	0.52	6.93	592	978	5	362	Neither
48	113	0166.33	19124	\$110,300	\$82,416	\$102,932	93.32	MIDDLE INCOME	6,005	95.24	4,988	79.11	833	13.21	5,472	86.79	65	1.03	16.48	1,875	2,162	8	870	Neither
48	113	0166.34	19124	\$110,300	\$46,716	\$58,338	52.89	MODERATE INCOME	3,280	92.73	724	20.47	2,490	70.4	1,047	29.6	13	0.37	25.91	635	1,133	5	752	Neither
48	113	0166.35	19124	\$110,300	\$23,015	\$28,744	26.06	LOW INCOME	3,888	96.67	3,561	88.54	241	5.99	3,781	94.01	14	0.35	37.91	0	577	0	300	Neither
48	113	0166.36	19124	\$110,300	\$90,260	\$112,727	102.2	MIDDLE INCOME	2,401	82.03	1,191	40.69	1,121	38.3	1,806	61.7	39	1.33	18.3	611	833	4	284	Neither
48	113	0166.37	19124	\$110,300	\$76,500	\$95,542	86.62	MIDDLE INCOME	3,002	94.22	1,838	57.69	1,042	32.71	2,144	67.29	72	2.26	12.25	814	1,072	3	301	Neither
48	113	0166.38	19124	\$110,300	\$66,029	\$82,460	74.76	MODERATE INCOME	1,634	82.4	1,265	63.79	297	14.98	1,686	85.02	36	1.82	0.94	145	399	1	312	Neither
48	113	0167.04	19124	\$110,300	\$56,250	\$70,250	63.69	MODERATE INCOME	4,217	94.02	2,932	65.37	1,185	26.42	3,300	73.58	23	0.51	19.93	1,103	1,583	9	362	Neither
48	113	0167.06	19124	\$110,300	\$36,824	\$45,984	41.69	LOW INCOME	2,334	92.88	1,653	65.78	643	25.59	1,870	74.41	4	0.16	43.38	477	783	0	278	Neither
48	113	0167.07	19124	\$110,300	\$49,477	\$61,790	56.02	MODERATE INCOME	4,341	96.02	3,512	77.68	694	15.35	3,827	84.65	36	0.8	4.39	1,120	1,369	4	393	Neither
48	113	0167.08	19124	\$110,300	\$100,046	\$124,948	113.28	MIDDLE INCOME	6,492	97.57	5,432	81.64	940	14.13	5,714	85.87	30	0.45	5.02	1,717	1,953	7	625	Neither
48	113	0167.09	19124	\$110,300	\$27,096	\$33,840	30.68	LOW INCOME	4,201	92.7	1,987	43.84	2,110	46.56	2,422	53.44	11	0.24	53.5	407	973	7	565	Neither
48	113	0167.10	19124	\$110,300	\$38,977	\$48,675	44.13	LOW INCOME	4,541	97.3	3,340	71.57	1,117	23.93	3,550	76.07	30	0.64	21.26	1,239	1,761	4	342	Neither
48	113	0167.11	19124	\$110,300	\$37,473	\$46,800	42.43	LOW INCOME	2,357	97.36	1,771	73.15	528	21.81	1,893	78.19	18	0.74	17.23	499	758	0	195	Neither
48	113	0168.02	19124	\$110,300	\$77,554	\$96,854	87.81	MIDDLE INCOME	4,678	85.6	2,968	54.31	1,529	27.98	3,936	72.02	31	0.57	13.88	1,335	1,495	16	721	Neither
48	113	0168.03	19124	\$110,300	\$43,254	\$54,014	48.97	LOW INCOME	5,540	84.19	3,296	50.09	2,053	31.2	4,527	68.8	18	0.27	26.84	1,175	1,772	11	704	Neither
48	113	0168.05	19124	\$110,300	\$90,735	\$113,322	102.74	MIDDLE INCOME	2,833	96.76	2,527	86.3	263	8.98	2,665	91.02	7	0.24	4.14	695	1,236	5	348	Neither
48	113	0168.06	19124	\$110,300	\$79,280	\$99,005	89.76	MIDDLE INCOME	5,417	96.11	4,551	80.75	769	13.64	4,467	86.36	12	0.21	8.15	1,058	1,631	2	642	Neither
48	113	0169.02	19124	\$110,300	\$40,734	\$50,870	46.12	LOW INCOME	8,556	79.53	2,828	38.41	2,924	39.71	4,839	60.29	27	0.37	32.77	551	889	3	495	Neither
48	113	0169.03	19124	\$110,300	\$56,754	\$70,879	64.26	MODERATE INCOME	5,672	82.79	1,829	26.7	3,651	53.29	3,200	46.71	18	0.26	22.73	1,226	1,999	13	522	Neither
48	113	0170.05	19124	\$110,300	\$57,998	\$72,434	65.67	MODERATE INCOME	4,096	82.61	1,006	20.29	2,956	59.62	2,002	40.38	15	0.3	21.95	925	1,195	8	279	Neither
48	113	0170.06	19124	\$110,300	\$63,577	\$79,394	71.98	MODERATE INCOME	2,942	51.63	727	12.76	1,979	34.73	3,719	65.27	40	0.7	8.44	924	1,268	11	454	Neither
48	113	0170.07	19124	\$110,300	\$40,244	\$50,253	45.56	LOW INCOME	3,738	75.02	547	10.98	3,054	61.29	1,929	38.71	6	0.12	26.34	1,040	1,443	7	262	Neither
48	113	0170.08	19124	\$110,300	\$70,667	\$88,251	80.01	MIDDLE INCOME	6,355	76.01	1,925	23.02	4,142	49.54	4,219	50.46	60	0.72	8.74	1,376	2,031	7	494	Neither
48	113	0170.09	19124	\$110,300	\$32,164	\$40,160	36.41	LOW INCOME	5,063	86.67	252	4.31	4,702	80.49	1,140	19.51	12	0.21	29.14	822	1,363	5	97	Neither
48	113	0170.10	19124	\$110,300	\$40,118	\$50,098	45.42	LOW INCOME	5,486	83.46	1,193	18.15	4,128	62.8	2,445	37.2	28	0.43	19.46	872	1,519	2	266	Neither
48	113	0171.01	19124	\$110,300	\$47,582	\$59,419	53.87	MODERATE INCOME	4,963	82.9	842	14.06	4,010	66.98	1,977	33.02	22	0.37	15.44	1,186	1,966	9	356	Neither
48	113	0171.02	19124	\$110,300	\$53,571	\$66,897	60.65	MODERATE INCOME	5,259	86.64	869	14.32	4,270	70.35	1,800	29.65	11	0.18	27.2	1,262	1,883	18	339	Neither
48	113	0172.01	19124	\$110,300	\$42,421	\$52,797	48.03	LOW INCOME	5,354	85.42	1,143	18.24	4,127	65.84	2,141	34.16	18	0.29	18.95	791	1,389	10	494	Neither
48	113	0172.03	19124	\$110,300	\$59,315	\$74,077	67.16	MODERATE INCOME	3,934	81.82	1,580	32.86	2,201	45.78	2,607	54.22	58	1.21	18.74	794	1,193	4	262	Neither
48	113	0172.04	19124	\$110,300	\$50,568	\$63,147	57.25	MODERATE INCOME	3,873	85.46	1,209	26.68	2,546	56.18	1,986	43.82	38	0.84	9.77	653	882	4	242	Neither
48	113	0173.07	19124	\$110,300	\$108,143	\$135,062	122.45	UPPER INCOME	3,231	73.72	1,425	32.51	1,321	30.14	3,062	69.86	359	8.19	0.49	972	1,115	5	366	Neither
48	113	0173.08	19124	\$110,300	\$100,484	\$125,488	113.77	MIDDLE INCOME	3,127	73.7	1,380	32.52	1,495	35.23	2,748	64.77	147	3.46	12.08	1,207	1,399	12	376	Neither
48	113	0173.09	19124	\$110,300	\$88,099	\$110,024	99.75	MIDDLE INCOME	2,752	81.4	1,501	44.4	1,020	30.17	2,361	69.83	118	3.49	3.35	621	997	3	250	Neither
48	113	0173.10	19124	\$110,300	\$96,389	\$120,381	109.14	MIDDLE INCOME	2,701	74.97	1,231	34.17	1,192	33.08	2,411	66.92	152	4.22	9.57	875	1,100	4	298	Neither
48	113	0173.11	19124	\$110,300	\$90,484	\$113,002	102.45	MIDDLE INCOME	2,604	67.41	765	19.8	1,612	41.73	2,251	58.27	89	2.3	6.94	803	1,120	3	239	Neither
48	113	0173.12	19124	\$110,300	\$70,698	\$88,295	80.05	MIDDLE INCOME	2,686	65.95	798	19.59	1,650	40.51	2,423	59.49	118	2.9	9.27	1,067	1,382	3	272	Neither
48	113	0173.13	19124	\$110,300	\$94,063	\$117,470	106.5	MIDDLE INCOME	3,016	85.32	1,920	54.31	825	23.34	2,710	76.66	183	5.18	3.15	839	977	5	297	Neither
48	113	0173.14	19124	\$110,300	\$89,746	\$112,087	101.62	MIDDLE INCOME	6,501	81.06	2,684	33.47	3,414	42.57	4,606	57.43	212	2.64	5.25	2,088	2,325	7	604	Neither
48	113	0173.15	19124	\$110,300	\$54,927	\$68,596	62.19	MODERATE INCOME	6,223	84.33	1,835	24.87	4,147	56.2	3,232	43.8	95	1.29	15.29	1,353	1,729	3	400	Neither
48	113	0174.00	19124	\$110,300	\$57,917	\$72,335	65.58	MODERATE INCOME	3,686	64.89	888	15.63	2,536	44.65	3,144	55.35	69	1.21	16.9	1,199	1,737	6	493	Neither
48	113	0175.00	19124	\$110,300	\$79,292	\$99,027	89.78	MIDDLE INCOME	2,250	58.85	731	19.12	1,337	34.97	2,486	65.03	67	1.75	1.91	1,073	1,278	5	541	Neither
48	113	0176.02	19124	\$110,300	\$54,531	\$68,099	61.74	MODERATE INCOME	3,495	80.14	737	16.9	2,633	60.38	1,728	39.62	44	1.01	23.72	973	1,193	3	352	Neither
48	113	0176.04	19124	\$110,300	\$46,974	\$58,658	53.18	MODERATE INCOME	2,828	82.57	501	14.63	2,252	65.75	1,173	34.25	7	0.2	9.55	542	875	1	165	Neither
48	113	0176.05	19124	\$110,300	\$45,227	\$56,485	51.21	MODERATE INCOME	3,792	96.22	1,194	30.3	2,495	63.31	1,446	36.69	43	1.09	21.32	874	1,119	4	185	Neither

48	113	9800.00	19124	\$110,300	\$0	\$0	0	NA	2	66.67	0	0	1	33.33	2	66.67	0	0	0	0	0	1	96	Neither
48	113	9801.00	19124	\$110,300	\$0	\$0	0	NA	40	100	0	0	39	97.5	1	2.5	1	2.5	0	0	0	0	264	Neither
48	113	9802.00	19124	\$110,300	\$24,760	\$30,917	28.03	LOW INCOME	1,574	40.8	265	6.87	595	15.42	3,263	84.58	479	12.42	73.28	0	52	0	25	Neither

Sources: 2020 Census Data with 2020 ACS-5 Updates and 2024 FFIEC/ACS-1 Updates